

ATOSA WTF160L Curved Refrigerated Showcase

The WTF160L 160L Curved Showcase is a great option to highlight and merchandise cakes and other perishable items.

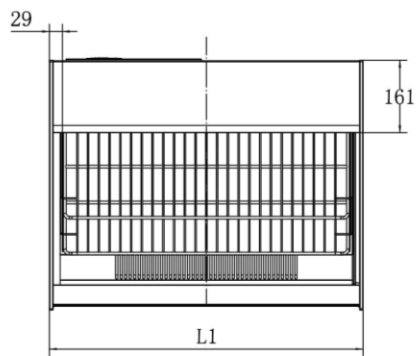
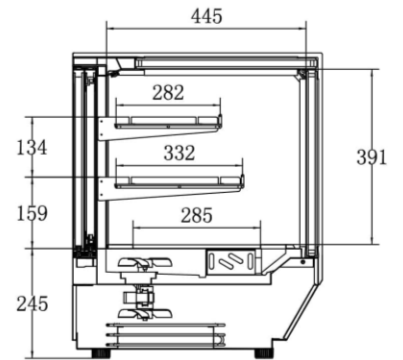
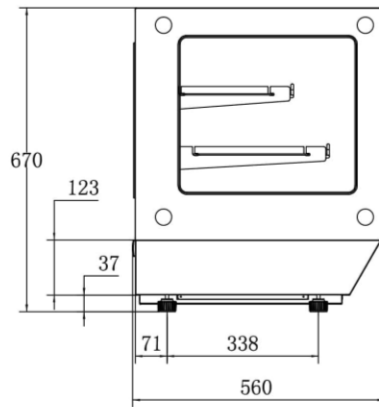
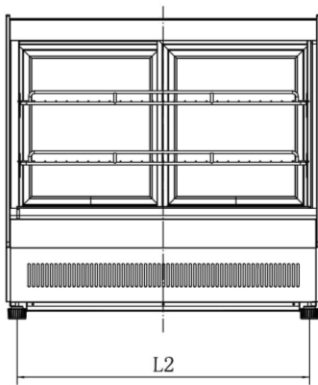


- ✓ Stainless Steel Interior & Exterior
- ✓ Sliding Glass Rear Door
- ✓ Double Safety Window to Front
- ✓ Single Safety Glass at Rear
- ✓ Adjustable Feet
- ✓ LED Interior Lighting
- ✓ Climate Class 3
- ✓ Interior Temperature +2°C to +8°C

SPECIFICATIONS

Summary		Power and Performance	
Brand	Atosa	Voltage (V/HZ/PH)	220/240/50/1
Model	WTF160L	Power (Watts)	165
Material External	StainlessSteel	Current (A)	1.8
Material Internal	Stainless Steel	Power Consumption (kW 24Hrs)	4.61
Shelf Quantity	2	Power Consumption (kW Year)	1683
LED Lighting	Yes		
Doors	2		

Key Specifications		Weights and Dimensions	
Climate Class	3	Exterior Dimension (WxDxH) mm	915 x 560 x 670
Defrost Method	Air Defrost	Exterior Dimension (WxDxH) mm	840 x 406 x 399
Refrigerant Type / Amount	R290 / 48	Packing Dimension (WxDxH) mm	984 x 641 x 790
Cooling Method	Ventilated	Gross Weight (Kg)	97
Inner Temperature (°C)	+2°C to +8°C	Net Weight (Kg)	75
Capacity (Litre)	160	Shelf Dimensions (mm)	850 x 288 / 850 x 338
Insulation Thickness (mm)	20	Loading Capacity per m2 (Kg)	7
Foaming Material	C2H10		



2	WTF160L	900	850	
1	WTF120L	700	650	
		L1 (mm)	L2 (mm)	

ATOSA®
LEADING MANUFACTURING COMPANY