

# ELECTRIC COOKTOPS 900mm - SEALED HOBS

E516S-B, E516S-CB, E516S-LS, E516S-RB

- Heavy-duty construction
- 2.6kW cast iron hot plate elements
- 4 models of base unit
- 1 model of refrigerated base with two GN 1/1 drawers
- Rear rollers
- Stainless steel exterior
- Easy clean
- Easy service
- Fully modular



E516S-LS

## Overall Construction

### Cooktop

- Welded hob with one-piece formed 2.0mm 304 stainless steel top
- Side panels 1.2mm 304 stainless steel
- Splashback 1.2mm 304 stainless steel
- Vitreous enamelled control panel
- 2.6kW cast iron hot plate elements with thermal protection
- Aluminised steel internal construction

### Bench mount (supplied as –B model)

- Four 63mm dia. heavy-duty 1.2mm 304 stainless steel bench legs with adjustable feet
- Adjustable height 80mm – 105mm

### Cabinet Base (supplied as –CB model)

- Fully modular for match suite finish
- Double skin 0.9mm 304 stainless steel interior and exterior
- Optional GN 1/1 4 position racking kit
- 63mm dia. heavy-duty 1.2mm 304 stainless steel legs with two adjustable feet at front and two rollers at rear

### Leg Stand (supplied as –LS model)

- Fully modular for matched suite finish
- Framed top for connection to Cooktop
- 63mm dia. heavy-duty 1.2mm 304 stainless steel legs with two adjustable feet at front and two rollers at rear
- Fully modular framed stand shelf with 0.9mm 304 stainless steel finish
- Quick assembly design

## Refrigerated Base (supplied as –RB model)

- Self contained suite matched modular base
- Ventilated system with R134a refrigerant
- -2 to +8°C temperature (Tropical Climate rated)
- Two GN 1/1 drawers
- 100mm deep pan capacity
- Heavy-duty European telescopic drawer guides
- Magnetic drawer gaskets (replaceable without tools)
- 50mm fully foamed CFC free insulation
- 304 stainless steel exterior and interior
- Anti-corrosion treated evaporator
- No condensate drain required
- 63mm dia. heavy-duty 1.2mm 304 stainless steel legs with adjustable feet
- Condensing unit removable through front of unit for service
- Easy clean interior

## Controls

### Cooktop

- Large easy use control knob - heat resistant reinforced
- Easy view control settings on knob
- Cast iron hot plate elements with 6 heat position switch
- Power indicator light for each element control

### Refrigerated Base

- Digital control electronic thermostat
- Automatic defrost
- Automatic evaporation of defrost water
- -2 to +8°C temperature range

## Cleaning and Servicing

- All models with easy clean stainless steel external finish
- One-piece worktop with formed hob wells to contain spills
- Access to all parts from front of unit
- Refrigerated Base condenser removable through front of unit

# ELECTRIC COOKTOPS 900mm - SEALED HOBS

E516S-B, E516S-CB, E516S-LS, E516S-RB

## Specifications

### Cooktop

2.6 kW Cast Iron Hot Plate elements

### Electrical requirements

#### E516S

15.6 kW, 400-415Vac, 50/60hz, 3P+N+E, 22A

### Refrigerated Base

#### Type

Ventilated system

#### Refrigerant

R134a (160grams)

#### Climate classification

T - tropical

#### Electrical connection

220-240Vac, 50Hz, 1.8A, 1P+N+E

3 pin plug 10A cordset fitted

#### Dimensions

##### Bench models

Width 900mm

Depth 812mm

Height 315mm

Incl. splashback 485mm

##### All models (excluding Bench model)

Width 900mm

Depth 812mm

Height 915mm

Incl. splashback 1085mm

#### Nett weight

##### Bench and Leg Stand models

90kg

##### Cabinet Base and Refrigerated Base models

130kg

#### Packing data

##### Bench and Leg Stand models

0.55m<sup>3</sup>, 135kg

Width 945mm

Depth 870mm

Height 665mm

##### Cabinet Base and Refrigerated Base models

1.03m<sup>3</sup>, 195kg

Width 945mm

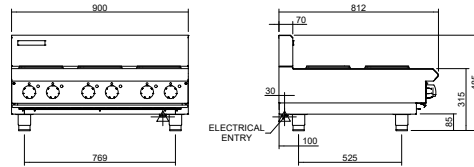
Depth 870mm

Height 1255mm

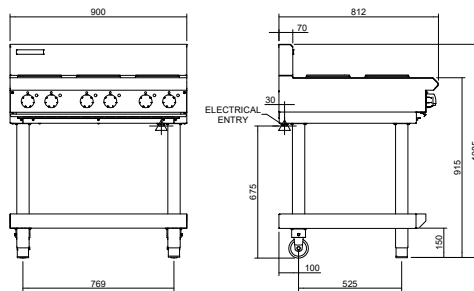
#### Options

Adjustable feet at rear

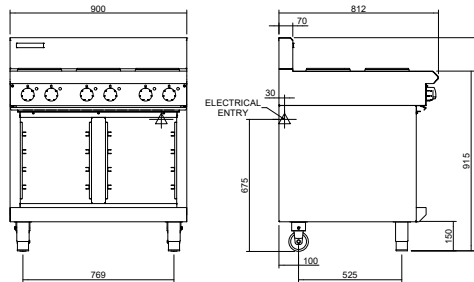
E516-B



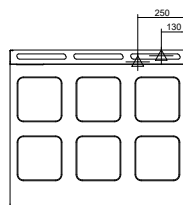
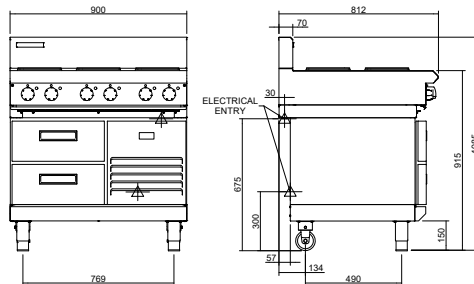
E516-LS



E516-CB



E516-RB



[www.blue-seal.co.uk](http://www.blue-seal.co.uk)

United Kingdom  
[blue-seal.co.uk](http://blue-seal.co.uk)

**Blue Seal Limited**  
Unit 67  
Gravelly Business Park  
Gravelly  
Birmingham B24 8TQ  
England  
Telephone 0121-327 5575  
Facsimile 0121-327 9711  
[sales@blue-seal.co.uk](mailto:sales@blue-seal.co.uk)

**Australia**  
[moffat.com.au](http://moffat.com.au)  
**Moffat Pty Limited**  
740 Springvale Road  
Mulgrave  
Victoria 3170  
Australia  
Telephone +613-9518 3888  
Facsimile +613-9518 3833  
[vsales@moffat.com.au](mailto:vsales@moffat.com.au)

**New Zealand**  
[moffat.co.nz](http://moffat.co.nz)  
**Moffat Limited**  
45 Illinois Drive  
Izone Business Hub  
Rolleston 7675  
New Zealand  
Telephone +64 3-983 6600  
Facsimile +64 3-983 6660  
[sales@moffat.co.nz](mailto:sales@moffat.co.nz)

**International**  
[moffat.com](http://moffat.com)  
[international@moffat.co.nz](mailto:international@moffat.co.nz)



Designed and manufactured by



ISO9001

All Blue Seal products are designed and manufactured by Moffat using the internationally recognised ISO9001 quality management system, covering design, manufacture and final inspection, ensuring consistent high quality at all times.

In line with policy to continually develop and improve its products, Moffat Limited reserves the right to change specifications and design without notice.



Copyright Moffat Ltd.  
UK.BS.2022

an Ali Group Company



The Spirit of Excellence