

CR6D

600mm Four Burner Gas Range Static Oven



CR6D

- 600mm wide
- 4 open burners
- 5kW open burner rating
- Flame failure standard on open burners
- Cast iron burners and vitreous enamel potstands
- High crown static oven
- 1/1 GN pan capacity
- Manual pilot ignition
- Side hinged door
- Vitreous enameled oven liner
- Adjustable front feet and rear rollers
- Stainless steel finish
- Fully modular

Also Available



CR6B



CR6C

OVERALL CONSTRUCTION

Cooktop

- Cast iron open burner heads with vitreous enamelled cast iron caps
- Vitreous enamelled potstands
- Vitreous enamelled control panel
- Stainless steel front, sides and splashback
- Stainless steel spill tray

Oven

- Vitreous enamelled oven liner
- GN 1/1 capacity with 4 position racking
- Supplied with two chrome plated oven racks
- Vitreous enamelled oven spill tray
- Stainless steel door and sides
- 63mm dia. stainless steel adjustable legs to front and two rollers at rear

CONTROLS

Cooktop

- Large easy use control knobs
- Variable high to low controls to open burners
- Flame failure standard on open burners

Oven

- 100-310°C thermostatic oven control
- Piezo ignition to oven pilot burner with flame failure

CLEANING AND SERVICING

- Easy clean stainless steel exterior
- Vitreous enamelled potstands and burner caps
- Lift off open burner caps and removable burners
- Removable spill trays
- Access to all parts from front of unit

Matching Products



CF2



C9C



CR6C



C450



CT9



CP4



CS9 / C900-S



C6B



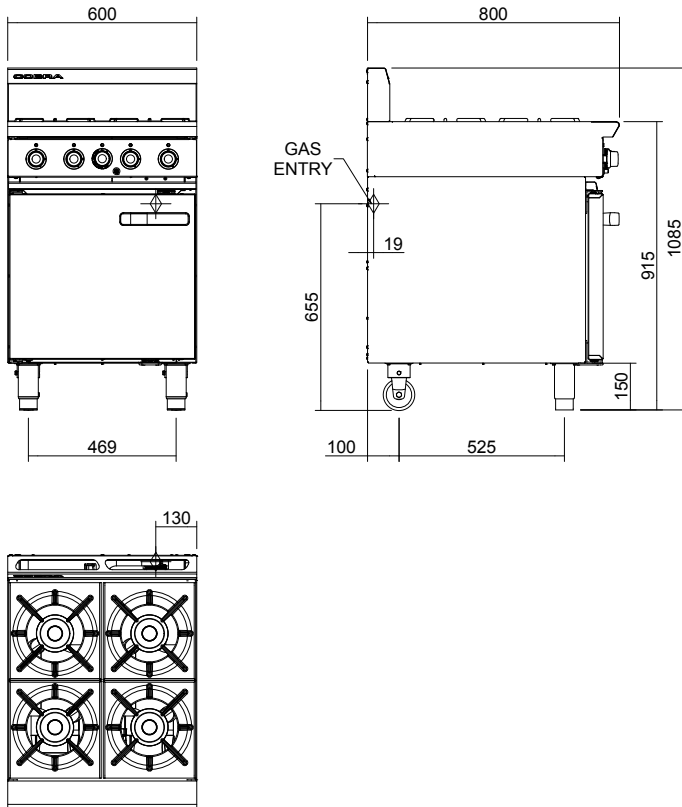
CT6



C300

CR6D

600mm Four Burner Gas Range Static Oven



CR6D

SPECIFICATIONS

Burners

Open Burners;
Natural Gas
5.0kW each
Propane gas
4.6W each

Oven;

Natural gas
6.5kW
Propane gas
6.0kW

Gas power

Natural gas
26.5kW (nett), 100,415 Btu/hr (gross)
Propane gas
24.4kW (nett), 90,495 Btu/hr (gross)

Gas flow rate

Natural gas 2.81m³/hr
Propane gas 1.91kg/hr

Oven dimensions

Width 460mm
Depth 615mm
Height 365mm

Rack size

450mm x 590mm
Rack positions 4

Gas connection

R 3/4 (BSP) male
130mm from RH side, 20mm from rear, and 655mm from floor

Dimensions

Width 600mm
Depth 800mm
Height 915mm
Incl. splashback 1085mm

Nett weight

99kg

Packing data

0.85m³, 130kg
Width 710mm
Depth 955mm
Height 1250mm

Gas types

Available in Natural gas and Propane gas, please specify when ordering
Other gas types on request

blue-seal.co.uk

United Kingdom

blue-seal.co.uk

Blue Seal Limited

Unit 67
Gravelly Business Park
Gravelly
Birmingham B24 8TQ
England
Telephone 0121-327 5575
Facsimile 0121-327 9711
sales@blue-seal.co.uk

Australia

moffat.com.au

Moffat Pty Limited

740 Springvale Road
Mulgrave, Victoria 3170
Australia
Telephone +613-9518 3888
Facsimile +613-9518 3833
vsales@moffat.com.au

New Zealand

moffat.co.nz

Moffat Limited

Rolleston
45 Illinois Drive
Izone Business Hub
Rolleston 7675
Telephone +64 3-983 6600
Facsimile +64 3-983 6660
sales@moffat.co.nz



ISO9001
Quality
Management
Standard

Designed and manufactured by



ISO9001

All Cobra products are designed and manufactured by Moffat using the internationally recognised ISO9001 quality management system, covering design, manufacture and final inspection, ensuring consistent high quality at all times.

In line with policy to continually develop and improve its products, Moffat Limited reserves the right to change specifications and design without notice.



© Copyright Moffat Ltd
UK.C.01.19 / 1622

an Ali Group Company



The Spirit of Excellence