

C201 D 8.5kW 16Amp 3 Phase



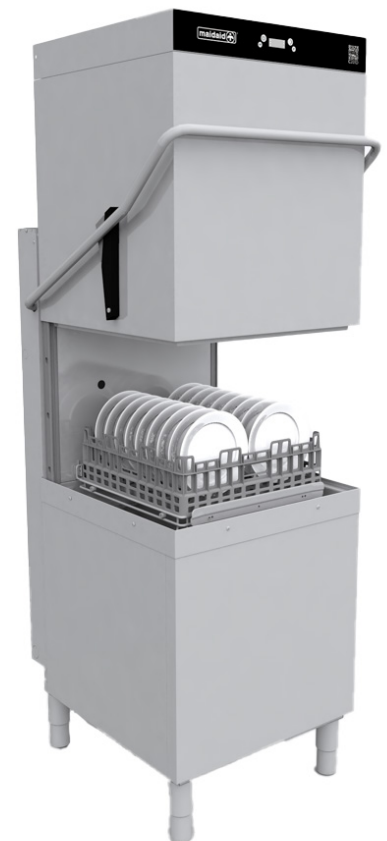
Buttress Group Ltd.
Top Station Road, Brackley,
Northants NN13 7UG, UK



	Overall dimensions (W x D x H)	mm	633 x 750 x 1560* (2060)†
	Packaging dimensions (W x D x H)	mm	760 x 840 x 1600
↙ ↘	Gross weight	Kg	99
	Net weight	Kg	89
	Cubic volume	m ³	0.98
	Rack size	mm	500 x 500
☒	Door opening	mm	470
	Max useable height	mm	450
	Rack guide rails		inox-side wings in composite
	Hood construction		single skin
	Tank construction		moulded
🍷	Tank volume	L	20
	Tank heating element	kW	3.0
	Surface scrap trays		composite (2mm mesh)
TANK 🌡️	Wash arms		parallel (quick release)
	Wash pump type		dual flow
	Wash pump power	kW	0.5
	Wash temperature	°C	55 - 60 (adjustable)
🔧	Boiler type		open
	Boiler volume	L	7.0
	Breaktank		yes
	Boiler heating element	kW	5.0
BOILER 🌡️	Rinse booster pump		yes
	Rinse booster pump power	kW	0.15
	Rinse temperature	°C	70 - 82 (adjustable)
	Rinse arms		parallel (quick release)
🚰	Drain system		partial drain
	Drain filter		triple filter
	Drain pump		yes
💧	Rinse aid dispenser	peristaltic	yes
	Detergent dispenser	peristaltic	yes
	Water consumption per cycle	L	1.5 - 2.0
🍷	Inlet water pressure	bar	0.5 - 6.0
	Fast program (GLS1)	sec	75
	Total programs	programs	9
	Total power	kW	8.5
⚡	Electric connection	V-Ph-Hz	400V 3+N 50Hz
	Fuse	A	16
🔌	Water softener		no

*Minimum height (+60mm with adjustable feet)

†Minimum height with hood open (+60mm with adjustable feet)



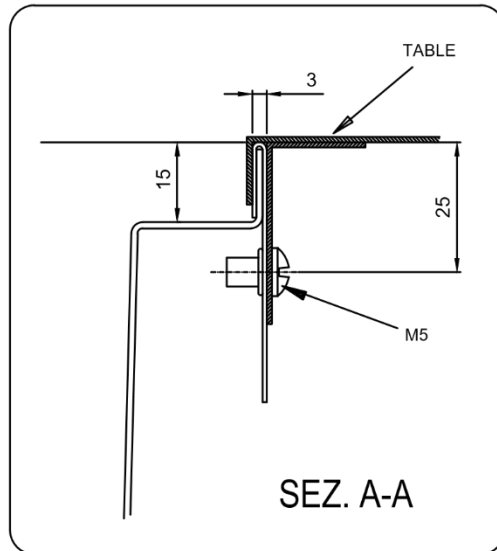
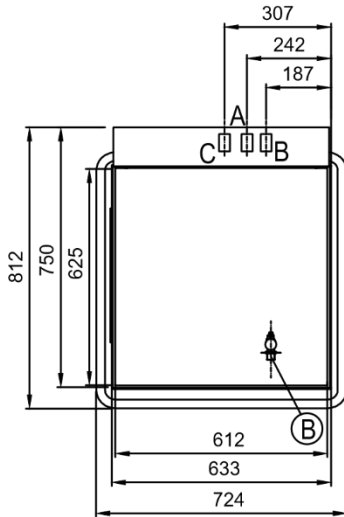
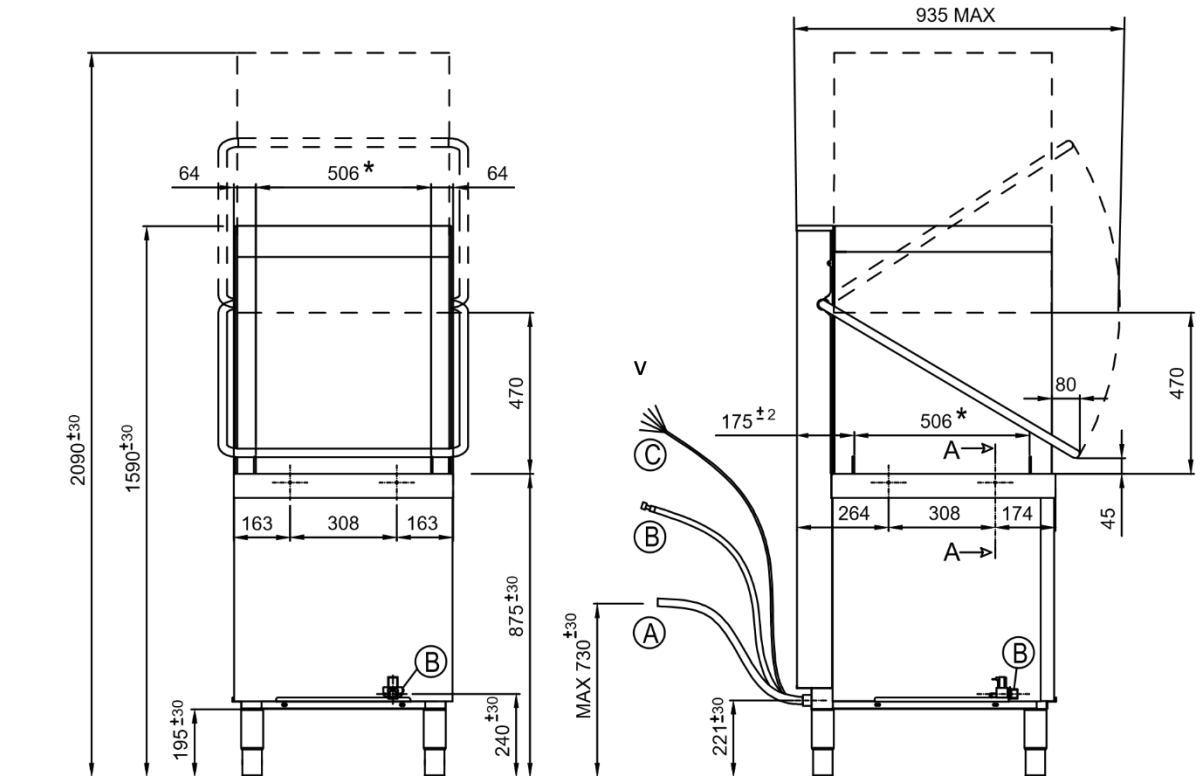
Supplied with

Flat rack	1
Plate rack	1
Cutlery rack	1
Electric cable	1
Drain hose	1
Fill hose	1

C201D 8.5kW 16Amp 3 Phase



Buttress Group Ltd.
 Top Station Road, Brackley,
 Northants NN13 7UG, UK



A		∅ 32 mm
B		G 3/4"
C		Power supply

* Available space for basket on the basket carrier

All services must be within 1 metre

T: 03451 308 070
 E: sales@maidaid-halcyon.co.uk
 Issue: 1.2